



REFRIGERATION & CATERING EQUIPMENT
MANUFACTURERS

ORIGINAL EQUIPMENT MANUFACTURER
PRODUCT CATALOGUE 2020



SABS
ISO 9001



FEBRUARY 2020

Dear Business Owner,

FOREWORD

With our team of Engineers and Designers, we offer turnkey solutions throughout the South African network of Catering Equipment Dealers, to some of the top names in the Food Retailing, Catering, and Hospitality Sectors.

While we look back at our track record with pride (since 1993), our focus is forward directed on establishing sustainable Dealer Client business relations.

At METNOR, we appreciate the importance of staying on the cutting edge of Stainless Steel design and fabrication; hence we constantly invest in the most up-to-date design software and hardware. Our on-going long term relationship with AMADA has ensured that we remain technologically abreast of the latest developments in Computer Numeric Control systems regarding our Punching/tapping/forming and Bending machines.

Our solutions are often highly innovative; these include material handling products such as trolleys, bakery racks, storage, and display equipment, particularly in Stainless Steel. We also manufacture an array of stock and bespoke products; these can be as varied as your individual needs - from mobile chefs' stations, to drinks dispensers and coffee stations.

Besides our renowned catering equipment, we also offer general manufacturing services and facilities.

THE OEM PRODUCT CATALOGUE 2020

Within this Catalogue, our products are categorised in five sections as follows-

- i) Structural - Tables, shelving, sinks, scullery and cabinets.
- ii) Trolleys - Collapsible, GN, GP and baking
- iii) Heating - Electrical (Cooking, storing, and display)
- iv) Heating - Liquefied Petroleum Gas (Cooking)
- v) Refrigeration - underbars and ice bins.

This Catalogue's graphics constitute rendered images, photographs and CAD drawings to showcase our range of capabilities, from design to finished products. As a guide, our standard range is depicted by renderings, special projects from the CAD drawings, and the photographs featuring a mix of both.

Feel free to contact METNOR for a dealer referral, or if you require additional information about our product range - we welcome your call.

Yours truly,



Grant Norton
Chief Executive Officer



Jean Deville
Key Accounts Manager

STRUCTURAL CULINARY RANGE

	Page
Tables	
Table - Plain Top	1
Table - Splashback	2
Hoying Table	3
Jockey Station Table.....	3
Outlet Table	4
Inlet Table	4
Dump Table	4
Shelving	
Shelving Wall Mounted	5
Shelving Pot Rack	5
Shelving Cold Room	5
Sinks	
Preparation Sink	6
Pot Sink	7
Veg Prep Sink (Combination)	7
Hand Wash Basin	7
General	
Dishwasher Basket	8
Grease Trap	8
Oven Stand	8
Ice Well	8
Cold Pass.....	8
Cabinets	
Sliding Door Cabinet	9
Neutral Cabinet	9

TROLLEY RANGE

General Purpose Trolley.....	10
Blood Crate Trolley.....	10
GN Trolley	10
Tuff Tray Trolley.....	10
Mobile Dolley Trolley	10
Collapsible GP.....	10

ELECTRIC CULINARY RANGE

Hot Closet	11
Food Service Cart	11
Chip Fryer	11
Bain Marie	12
Flat Top Griddle	12
Chip Dump Station	12
Salamander	12
Hot Plate.....	13
Hot Pass	13

GAS CULINARY RANGE

Salamander	14
Boiling Table	14
Flat Top Griddle	14
Gas Grill Radiant	15
Stock Pot Boiling Table	15
WOK Table.....	15

UNDERBARS & ICE BINS

Stainless Steel Door (Std) Plain, Splashback 100mm & Pizza Top	16
Glass Door (Std) Plain, Splashback 100mm & Pizza Top	17
Polar Top Stainless Steel Door (Std)	17
Stainless Steel Door (GN) Plain, Splashback 100mm & Pizza Top	18
Glass Door (GN) Plain, Splashback 100mm & Pizza Top	19
Slide Top with Bottom Loading Doors.....	20
Freezer Stainless Steel Door (GN)	20
Hampers Stainless Steel Door (Std).....	20
Hampers Glass Door (Std).....	20
Ice Bin	21
Low Boy Stainless Steel Door	21
Low Boy Glass Door	21

STRUCTURAL CULINARY RANGE

At the heart of our fabrication, an exciting and versatile material: STAINLESS STEEL grade 430 Brushed.

"Stainless Steel was the descriptive term given to the new "rust resisting" steels discovered by essentially four persons in the early 1900's. It has continued to be used as a generic term applied to an ever-increasing number of different grades of Stainless Steels - SS409, 3CR12, SS304 and SS316, to name a few used in our industry."



TABLE I PLAIN TOP

MODEL	DESCRIPTION Plain Top Table 650 mm	WEIGHT (kg)	DIMENSIONS (L X B X H) mm
TA-4-P-060065-SG	Plain Top Table with Shelf	22	600x650x915
TA-4-P-084065-SG	Plain Top Table with Shelf	27	840x650x915
TA-4-P-105065-SG	Plain Top Table with Shelf	31	1050x650x915
TA-4-P-120065-SG	Plain Top Table with Shelf	34	1200x650x915
TA-4-P-125065-SG	Plain Top Table with Shelf	35	1250x650x915
TA-4-P-150065-SG	Plain Top Table with Shelf	40	1500x650x915
TA-4-P-165065-SG	Plain Top Table with Shelf	43	1650x650x915
TA-4-P-180065-SG	Plain Top Table with Shelf	46	1800x650x915
TA-4-P-185065-SG	Plain Top Table with Shelf	47	1850x650x915
TA-4-P-225065-SG	Plain Top Table with Shelf	55	2250x650x915

MODEL	DESCRIPTION Plain Top Table 750 mm	WEIGHT (kg)	DIMENSIONS (L X B X H) mm
TA-4-P-060075-SG	Plain Top Table with Shelf	25	600x750x915
TA-4-P-084075-SG	Plain Top Table with Shelf	30	840x750x915
TA-4-P-105075-SG	Plain Top Table with Shelf	34	1050x750x915
TA-4-P-120075-SG	Plain Top Table with Shelf	38	1200x750x915
TA-4-P-125075-SG	Plain Top Table with Shelf	39	1250x750x915
TA-4-P-150075-SG	Plain Top Table with Shelf	45	1500x750x915
TA-4-P-165075-SG	Plain Top Table with Shelf	48	1650x750x915
TA-4-P-180075-SG	Plain Top Table with Shelf	52	1800x750x915
TA-4-P-185075-SG	Plain Top Table with Shelf	62	1850x750x915
TA-4-P-225075-SG	Plain Top Table with Shelf	64	2250x750x915

- Work top constructed with grade 430 brushed Stainless Steel, undershelf galvanised steel.
- Work top Duty: 150kg/m².
- Heavy duty Flat packable legs constructed from 40x40 Stainless Steel Square Tubing with adjustable pvc feet.
- High Temperature Sound Absorbent Laminate between top and inner.
- Weight rating for shelf is +-50kg/m².
- Optional extras and material deviations: *please contact METNOR for an accredited dealer referral for a professional consultation in this regard.*

TABLE I SPLASHBACK 100mm

MODEL	DESCRIPTION Splash Back Table 650 mm	WEIGHT (kg)	DIMENSIONS (L X B X H) mm
TA-4-S-060065-SG	Splash Back Table with Shelf	24	600x650x915
TA-4-S-084065-SG	Splash Back Table with Shelf	28	840x650x915
TA-4-S-105065-SG	Splash Back Table with Shelf	33	1050x650x915
TA-4-S-120065-SG	Splash Back Table with Shelf	37	1200x650x915
TA-4-S-125065-SG	Splash Back Table with Shelf	38	1250x650x915
TA-4-S-150065-SG	Splash Back Table with Shelf	43	1500x650x915
TA-4-S-165065-SG	Splash Back Table with Shelf	46	1650x650x915
TA-4-S-180065-SG	Splash Back Table with Shelf	50	1800x650x915
TA-4-S-185065-SG	Splash Back Table with Shelf	51	1850x650x915
TA-4-S-225065-SG	Splash Back Table with Shelf	59	2250x650x915

MODEL	DESCRIPTION Splash Back Table 750 mm	WEIGHT (kg)	DIMENSIONS (L X B X H) mm
TA-4-S-060075-SG	Splash Back Table with Shelf	26	600x750x915
TA-4-S-084075-SG	Splash Back Table with Shelf	31	840x750x915
TA-4-S-105075-SG	Splash Back Table with Shelf	36	1050x750x915
TA-4-S-120075-SG	Splash Back Table with Shelf	41	1200x750x915
TA-4-S-125075-SG	Splash Back Table with Shelf	42	1250x750x915
TA-4-S-150075-SG	Splash Back Table with Shelf	48	1500x750x915
TA-4-S-165075-SG	Splash Back Table with Shelf	51	1650x750x915
TA-4-S-180075-SG	Splash Back Table with Shelf	54	1800x750x915
TA-4-S-185075-SG	Splash Back Table with Shelf	55	1850x750x915
TA-4-S-225075-SG	Splash Back Table with Shelf	66	2250x750x915

- Work top constructed with grade 430 brushed Stainless Steel, undershelf galvanised steel.
- Work top Duty: 150kg/m².
- Heavy duty Flat packable legs constructed from 40x40 Stainless Steel Square Tubing with adjustable pvc feet.
- High Temperature Sound Absorbent Laminate between top and inner
- Weight rating for shelf is +/-50kg/m².
- Optional extras and material deviations: *please contact METNOR for an accredited dealer referral for a professional consultation in this regard.*





HOYING TABLE

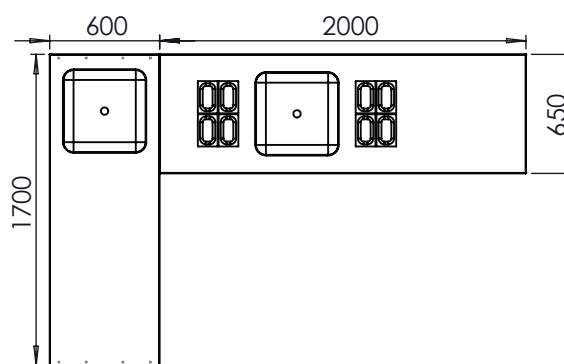
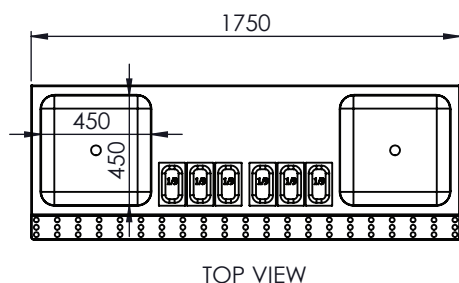
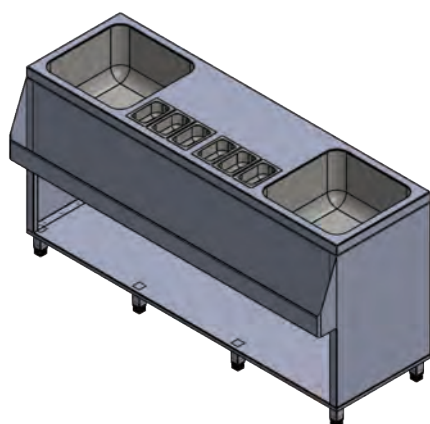
MODEL	DESCRIPTION	WEIGHT (kg)	DIMENSIONS (L X B X H) mm
	Hoisting Table Frame SS430		
Hoisting	Hoisting Table Frame and 3 bins	21	600x650x900

- Constructed with grade 430 brushed Stainless Steel.
- Stainless steel Square Tubing used for strength.
- Mobile on 75 mm Castors.

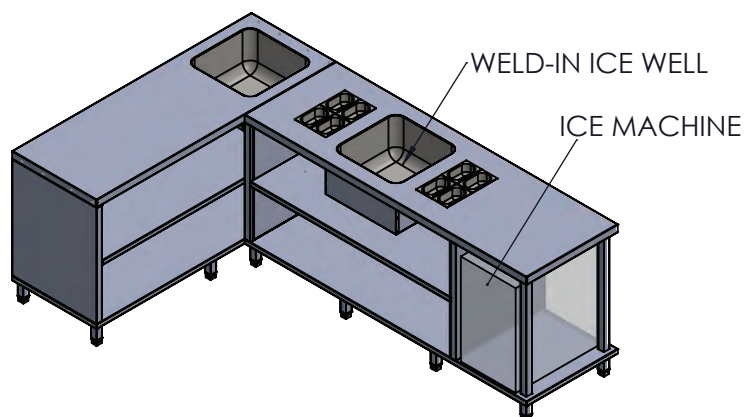
JOCKEY STATION TABLE

MODEL	DESCRIPTION	WEIGHT (kg)	DIMENSIONS (L X B X H) mm
	Cold Pass Ambient		
TA-4-Jockey-1650	Jockey Station c/w Ice Well, MB5 Bowl and 1T Speedrail with SS Shelf	58	1650x650x915
TA-4-Jockey-1800	Jockey Station c/w Ice Well, MB5 Bowl and 1T Speedrail with SS Shelf	62	1800x650x915
TA-4-Jockey-2250	Jockey Station c/w Ice Well, MB5 Bowl and 1T Speedrail with SS Shelf	72	2250x650x915
TA-4-Jockey-2340	Jockey Station c/w Ice Well, MB5 Bowl and 1T Speedrail with SS Shelf	82	2340x650x915

- Constructed with grade 430 brushed Stainless Steel.
- Features: Cut outs for inserts, Ice Well, MB5 sink Bowl, 1T Speedrail, under shelf and scape hole.
- Optional sizes, additional features and material deviations: *please contact METNOR for an accredited dealer referral for a professional consultation in this regard.*



TOP VIEW



OUTLET TABLE | SCULLERY

MODEL	DESCRIPTION	WEIGHT (kg)	DIMENSIONS (L X B X H) mm
	Outlet Table SS430		
TA-4-O-070	Outlet Table With 1 Set of Legs	18	700x620x915
TA-4-O-090	Outlet Table With 1 Set of Legs	24	900x620x915
TA-4-O-110	Outlet Table With 1 Set of Legs	32	1100x620x915
TA-4-O-160	Outlet Table With 1 Set of Legs	41	1600x620x915

INLET TABLE | SCULLERY

MODEL	DESCRIPTION	WEIGHT (kg)	DIMENSIONS (L X B X H) mm
	Inlet Table SS430		
SI-4-IN-SB-070	Inlet Sink Table With Splash Guard (Bowl size 450x450x250)	22	700x620x915
SI-4-IN-SB-090	Inlet Sink Table With Splash Guard (Bowl size 450x450x250)	25	900x620x915
SI-4-IN-SB-110	Inlet Sink Table With Splash Guard (Bowl size 450x450x250)	30	1100x620x915
SI-4-IN-SB-160	Inlet Sink Table With Splash Guard (Bowl size 450x450x250)	39	1600x620x915

DUMP TABLE | SCULLERY

MODEL	DESCRIPTION	WEIGHT (kg)	DIMENSIONS (L X B X H) mm
	Dump Table SS304		
TA-3-DU-1T-110	Single (1 T) Dump Table	28	1100x620x915
TA-3-DU-1T-160	Single (1 T) Dump Table	36	1600x620x915
TA-3-DU-1T-180	Single (1 T) Dump Table	40	1800x620x915
TA-3-DU-1T-210	Single (1 T) Dump Table	44	2100x620x915
TA-3-DU-2T-110	Double (2 T) Dump Table	49	1100x620x1500
TA-3-DU-2T-160	Double (2 T) Dump Table	64	1600x620x1500
TA-3-DU-2T-180	Double (2 T) Dump Table	70	1800x620x1500
TA-3-DU-2T-210	Double (2 T) Dump Table	80	2100x620x1500
TA-3-DU-MU-110	Dump Table with Mushroom Basket Shelf	68	1100x620x1500
TA-3-DU-MU-160	Dump Table with Mushroom Basket Shelf	84	1600x620x1500
TA-3-DU-MU-180	Dump Table with Mushroom Basket Shelf	90	1800x620x1500
TA-3-DU-MU-210	Dump Table with Mushroom Basket Shelf	107	2100x620x1500
TA-3-DU-A-110	Dump Table with Angled Basket Shelf	50	1100x620x1500
TA-3-DU-A-160	Dump Table with Angled Basket Shelf	63	1600x620x1500
TA-3-DU-A-180	Dump Table with Angled Basket Shelf	68	1800x620x1500
TA-3-DU-A-210	Dump Table with Angled Basket Shelf	78	2100x620x1500

- Work top constructed with grade 430 brushed Stainless Steel, High boxed edge to guide dishwasher basket.
- Heavy duty mig welded legs constructed from 40x40 Stainless Steel Square Tubing with adjustable pvc feet to one side only. Extra set of legs to be ordered on demand.
- Optional sizes and material deviations: *please contact METNOR for an accredited dealer referral for a professional consultation in this regard.*



SABS
ISO 9001



SABS
ISO 9001



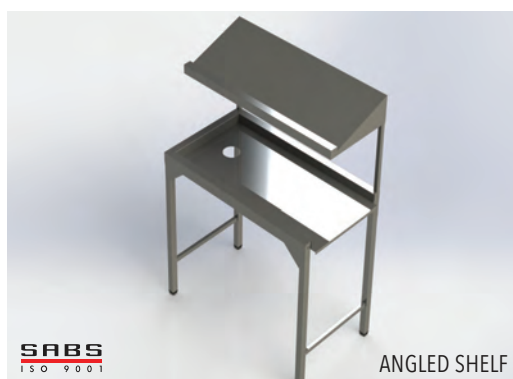
SABS
ISO 9001

SINGLE



SABS
ISO 9001

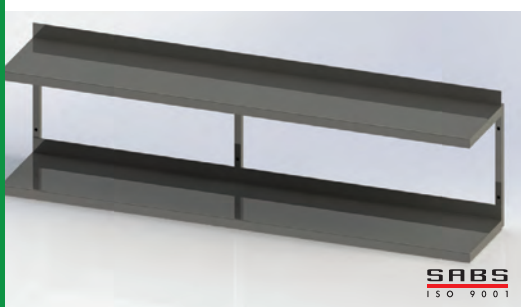
MUSHROOM SHELF



SABS
ISO 9001

ANGLED SHELF

STRUCTURAL



SHELVING | WALL MOUNTED

MODEL	DESCRIPTION Shelving Wall Mounted	WEIGHT (kg/m)	DIMENSIONS (L X B X H) mm
SH-4-WM-1T-30-POL	Wall Mounted Shelf Single Stainless Steel	6	L x 300
SH-4-WM-1T-50-POL	Wall Mounted Shelf Single Stainless Steel	8	L x 500
SH-4-WM-2T-30-POL	Wall Mounted Shelf Double Stainless Steel	12	L x 300
SH-4-WM-2T-50-POL	Wall Mounted Shelf Double Stainless Steel	16	L x 500
Microwave Shelf	Wall Mounted	4kg	600 x 400
Salamander Shelf	Wall Mounted	7,2kg	900 x 400

- Constructed with grade 430 brushed Stainless Steel.
- Available in single and double tier, range of sizes.
- Mounting brackets constructed from formed Square tubing ensuring robust design.

SHELVING | POT RACK



MODEL	DESCRIPTION Shelving Pot Rack	WEIGHT (kg/m)	DIMENSIONS (L X B X H) mm
SH-44-PR-1T-090040	Pot Rack Single Stainless Steel	4,5	L x 400
SH-44-PR-2T-090040	Pot Rack Double Stainless Steel	9	L x 400

- Constructed with 19mm Round Tube 441 Stainless Steel.
- Range of sizes.
- Mounting brackets constructed from formed Square tubing ensuring robust design

SHELVING | COLD ROOM (Galvanised or Stainless Steel)



MODEL	DESCRIPTION Shelving 4 Tier Galv 0,8	WEIGHT (kg)	DIMENSIONS (L X B X H) mm
SH-0,8-G-4T-085038	Shelving Galv 4 Tier (4 Shelves)	19	850x380
SH-0,8-G-4T-085050	Shelving Galv 4 Tier (4 Shelves)	22	850x500
SH-0,8-G-4T-115038	Shelving Galv 4 Tier (4 Shelves)	23	1150x380
SH-0,8-G-4T-115050	Shelving Galv 4 Tier (4 Shelves)	31	1150x500

MODEL	DESCRIPTION Shelving 4 Tier Galv 1,2	WEIGHT (kg)	DIMENSIONS (L X B X H) mm
SH-1,2-G-4T-085038	Shelving Galv 4 Tier (4 Shelves)	21	850x380
SH-1,2-G-4T-085050	Shelving Galv 4 Tier (4 Shelves)	24	850x500
SH-1,2-G-4T-115038	Shelving Galv 4 Tier (4 Shelves)	25	1150x380
SH-1,2-G-4T-115050	Shelving Galv 4 Tier (4 Shelves)	29	1150x500

SHELVING | COLD ROOM (Galvanised or Stainless Steel) cont.

MODEL	DESCRIPTION	WEIGHT	DIMENSIONS
	Shelving 4 Tier SS430-0,9	(kg)	(L X B X H) mm
SH-0,9-4-4T-085038	Shelving SS430 4 Tier (4 Shelves)	21	850x380
SH-0,9-4-4T-085050	Shelving SS430 4 Tier (4 Shelves)	24	850x500
SH-0,9-4-4T-115038	Shelving SS430 4 Tier (4 Shelves)	25	1150x380
SH-0,9-4-4T-115050	Shelving SS430 4 Tier (4 Shelves)	29	1150x500

MODEL	DESCRIPTION	WEIGHT	DIMENSIONS
	Shelving 4 Tier SS430-1,2	(kg)	(L X B X H) mm
SH-1,2-4-4T-085038	Shelving SS430 4 Tier (4 Shelves)	21	850x380
SH-1,2-4-4T-085050	Shelving SS430 4 Tier (4 Shelves)	24	850x500
SH-1,2-4-4T-115038	Shelving SS430 4 Tier (4 Shelves)	25	1150x380
SH-1,2-4-4T-115050	Shelving SS430 4 Tier (4 Shelves)	29	1150x500

- Constructed with Stainless Steel or Galvanised Steel.
- Range of sizes.
- Robust design.
- Supplied flat packed and easy to assemble.
- Optional extras and material deviations: *please contact METNOR for an accredited dealer referral for a professional consultation in this regard.*



STRUCTURAL

PREPARATION SINK | SINGLE or DOUBLE

MODEL	DESCRIPTION	WEIGHT	DIMENSIONS
	Preparation Sinks 650mm Splash Back 100mm	(kg)	(L X B X H) mm
SI-4-PR-S-070	Single Bowl Prep Sink (Bowl Size 500x500x250)	26	700x650x915
SI-4-PR-S-900	Single Bowl Prep Sink (Bowl Size 500x500x250)	30	900x650x915
SI-4-PR-S-120	Single Bowl Prep Sink (Bowl Size 500x500x250)	36	1200x650x915
SI-4-PR-S-165	Single Bowl Prep Sink (Bowl Size 500x500x250)	46	1650x650x915
SI-4-PR-S-185	Single Bowl Prep Sink (Bowl Size 500x500x250)	50	1850x650x915
SI-4-PR-S-225	Single Bowl Prep Sink (Bowl Size 500x500x250)	58	2250x650x915
SI-4-PR-D-120	Double Bowl Prep Sink (Bowl Size 500x500x250)	39	1200x650x915
SI-4-PR-D-165	Double Bowl Prep Sink (Bowl Size 500x500x250)	48	1650x650x915
SI-4-PR-D-185	Double Bowl Prep Sink (Bowl Size 500x500x250)	53	1850x650x915
SI-4-PR-D-225	Double Bowl Prep Sink (Bowl Size 500x500x250)	61	2250x650x915
SI-4-PR-T-200	Triple Bowl Prep Sink (Bowl Size 500x500x250)	67	2250x650x915

- Work top constructed with grade 430 brushed Stainless Steel, pressed bowls 500mm x 500mm x 250mm grade 304 Stainless Steel, Drip fillet on front and sides, Splashback 100mm to rear.
- Heavy duty mig welded legs constructed from 40x40 Stainless Steel Square Tubing with adjustable pvc feet.
- Bowl orientation and material deviations: *please contact METNOR for an accredited dealer referral for a professional consultation in this regard.*





POT SINK | SINGLE or DOUBLE

MODEL	DESCRIPTION Pot Sinks 650mm Splash Back 100mm	WEIGHT (kg)	DIMENSIONS (L X B X H) mm
SI-4-PO-S-090	Single Bowl Pot Sink (Size 600x500x300)	35	900x650x915
SI-4-PO-S-120	Single Bowl Pot Sink (Size 600x500x300)	41	1200x650x915
SI-4-PO-S-165	Single Bowl Pot Sink (Size 600x500x300)	51	1650x650x915
SI-4-PO-S-185	Single Bowl Pot Sink (Size 600x500x300)	54	1850x650x915
SI-4-PO-S-225	Single Bowl Pot Sink (Size 600x500x300)	63	2250x650x915
SI-4-PO-D-165	Double Bowl Pot Sink (Size 600x500x300)	56	1650x650x915
SI-4-PO-D-185	Double Bowl Pot Sink (Size 600x500x300)	59	1850x650x915
SI-4-PO-D-225	Double Bowl Pot Sink (Size 600x500x300)	68	2250x650x915
SI-4-PO-T-225	Triple Bowl Pot Sink (Size 600x500x300)	73	2250x650x915

- Work top constructed with grade 430 brushed Stainless Steel, pressed bowls 600mm x 500mm x 300mm grade 304 Stainless Steel, Drip fillet on front and sides, Splashback 100mm to rear.
- Heavy duty mig welded legs constructed from 40x40 Stainless Steel Square Tubing with adjustable pvc feet.
- Bowl orientation and material deviations: *please contact METNOR for an accredited dealer referral for a professional consultation in this regard.*

VEG PREP SINK | COMBINATION OF POT & PREP BOWLS

MODEL	DESCRIPTION Veg Prep Sink Combination 650mm	WEIGHT (kg)	DIMENSIONS (L X B X H) mm
SI-4-VP-D-135	Double Bowl Veg Prep Sink (Bowl Size 600x500 & 500x500)	49	1350x650x915
SI-4-VP-D-150	Double Bowl Veg Prep Sink (Bowl Size 600x500 & 500x500)	52	1500x650x915
SI-4-VP-D-185	Double Bowl Veg Prep Sink (Bowl Size 600x500 & 500x500)	59	1850x650x915
SI-4-VP-D-225	Double Bowl Veg Prep Sink (Bowl Size 600x500 & 500x500)	68	2250x650x915

- Work top constructed with grade 430 brushed Stainless Steel, pressed bowls 600mm (500mm) x 500mm x 300mm (250mm) grade 304 Stainless Steel, Drip fillet on front and sides, Splashback 100mm to rear.
- Heavy duty mig welded legs constructed from 40x40 Stainless Steel Square Tubing with adjustable pvc feet.
- Bowl orientation and material deviations: *please contact METNOR for an accredited dealer referral for a professional consultation in this regard.*

HANDWASH BASIN

MODEL	DESCRIPTION Hand Wash Basin	WEIGHT (kg)	DIMENSIONS (L X B X H) mm
SI-4-HWB-WM	Wall Mounted Hand Wash Basin	3	530x420
SI-4-HWB-FR	Freestanding Hand Wash Basin	9	530x420x900
SI-4-HWB-KO	Wall Mounted Hand Wash Basin Knee Operated	4	480x440

- Bowls constructed with grade 304 Stainless Steel.
- Wall mounted or cabinet.



DISHWASHER BASKET RACK 3 tier

MODEL	DESCRIPTION	WEIGHT	DIMENSIONS
	Ice Wells	(kg)	(L X B X H) mm
IW-3-035035	Dishwasher Single Basket Rack under to take 3 Baskets	8	560x550x750
IW-3-045035	Dishwasher Double Basket Rack under to take 6 Baskets	5	1050x550x750

- Constructed from grade 430 brushed Stainless Steel.
- With feet or welded to underside of scullery tables.

GREASE TRAP

MODEL	DESCRIPTION	WEIGHT	DIMENSIONS
	Grease Tap	(kg)	(L X B X H) mm
GT-3-081051	Grease Trap SS304 - Free Standing with 2 x Lids & Baskets	42	810x510x450
GT-3-045045	Grease Trap SS304 - Free Standing with Lid & Baskets	18	450x450x450
GT-3-045045-econo	Grease Trap SS430 - Free Standing with Lid & Baskets	18	450x450x450

- Constructed with grades 409, 430 or 304 Stainless Steel.
- Lid features Stainless Steel latches.

HEAVY DUTY OVEN STAND

MODEL	DESCRIPTION	WEIGHT	DIMENSIONS
	Oven Stand	(kg)	(L X B X H) mm
RAT-99000	Oven Stand S/S with Top (Combi Steam)	41	925x805x750

- Rated for 400kg's.
- Stainless Steel Frame with adjustable pvc feet and Runners for GN inserts.
- Constructed from grade 430 brushed Stainless Steel.

ICE WELL | NO LIDS

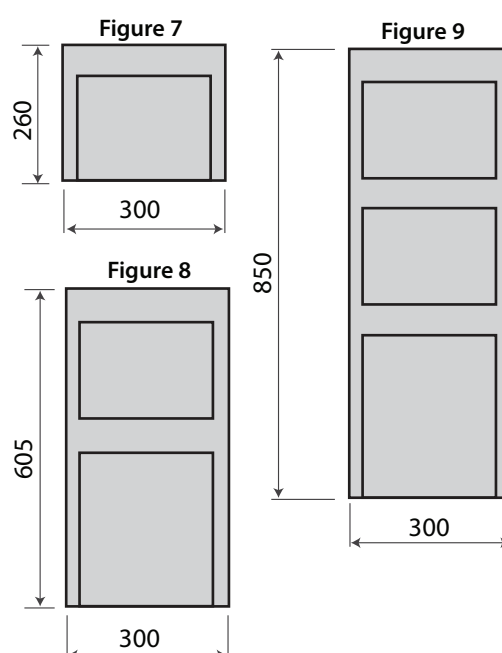
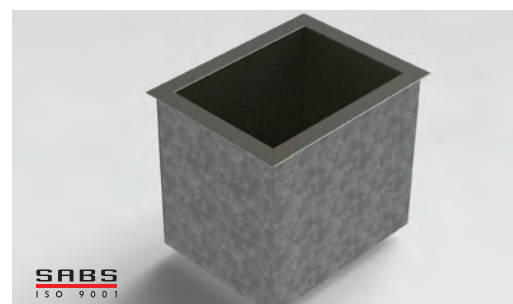
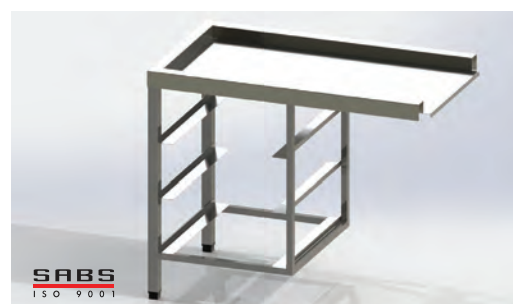
MODEL	DESCRIPTION	WEIGHT	DIMENSIONS
	Ice Wells	(kg)	(L X B X H) mm
IW-3-035035	Ice Well drop in SS304 with galv outer	12	350x350x350
IW-3-045035	Ice Well drop in SS304 with galv outer	15	450x350x350

- Constructed with Grade 304 Stainless Steel Drop in profile with galvanised steel exterior.
- 20mm Stainless Steel drainage ball valve.
- Insulated 40mm.

COLD PASS | AMBIENT

MODEL	DESCRIPTION	WEIGHT	DIMENSIONS
	Cold Pass Ambient	(kg)	(L X B X H) mm
PAC-4-F1PM	Cold Pass figure 7	NA	L x 300 x 260H
PAC-4-F2PM	Cold Pass figure 8	NA	L x 300 x 605H
PAC-4-F3PM	Cold Pass figure 9	NA	L x 300 x 850H

- Constructed with grade 430 brushed Stainless Steel.
- Robust design.
- Stainless Steel tubing for strength.
- Available in various configurations 1, 2, and 3 tier.





SLIDING DOOR CABINET

MODEL	DESCRIPTION Sliding Door Cabinet 650mm	WEIGHT (kg)	DIMENSIONS (L X B X H) mm
CA-4-P-SD-080065	Plain Top Sliding Door Cabinet	52	800x650x915
CA-4-P-SD-100065	Plain Top Sliding Door Cabinet	61	1000x650x915
CA-4-P-SD-120065	Plain Top Sliding Door Cabinet	70	1200x650x915
CA-4-P-SD-125065	Plain Top Sliding Door Cabinet	72	1250x650x915
CA-4-P-SD-150065	Plain Top Sliding Door Cabinet	83	1500x650x915
CA-4-P-SD-165065	Plain Top Sliding Door Cabinet	89	1650x650x915
CA-4-P-SD-180065	Plain Top Sliding Door Cabinet	96	1800x650x915
CA-4-P-SD-185065	Plain Top Sliding Door Cabinet	98	1850x650x915
CA-4-P-SD-200065	Plain Top Sliding Door Cabinet	104	2000x650x915
CA-4-P-SD-225065	Plain Top Sliding Door Cabinet	115	2250x650x915
CA-4-P-SD-240065	Plain Top Sliding Door Cabinet	121	2400x650x915
CA-4-P-SD-250065	Plain Top Sliding Door Cabinet	126	2500x650x915

- Constructed with grade 430 brushed Stainless Steel.
- Available with splashback 100mm.
- Fixed height mid shelf.
- Adjustable pvc feet.

NEUTRAL CABINET



MODEL	DESCRIPTION Neutral Cabinet 650mm	WEIGHT (kg)	DIMENSIONS (L X B X H) mm
CA-4-N-P-080065	Plain Top Cabinet (No Doors)	43	800x650x915
CA-4-N-P-100065	Plain Top Cabinet (No Doors)	49	1000x650x915
CA-4-N-P-120065	Plain Top Cabinet (No Doors)	56	1200x650x915
CA-4-N-P-125065	Plain Top Cabinet (No Doors)	58	1250x650x915
CA-4-N-P-150065	Plain Top Cabinet (No Doors)	69	1500x650x915
CA-4-N-P-165065	Plain Top Cabinet (No Doors)	71	1650x650x915
CA-4-N-P-180065	Plain Top Cabinet (No Doors)	76	1800x650x915
CA-4-N-P-185065	Plain Top Cabinet (No Doors)	77	1850x650x915
CA-4-N-P-200065	Plain Top Cabinet (No Doors)	82	2000x650x915
CA-4-N-P-225065	Plain Top Cabinet (No Doors)	90	2250x650x915
CA-4-N-P-240065	Plain Top Cabinet (No Doors)	95	2400x650x915
CA-4-N-P-250065	Plain Top Cabinet (No Doors)	98	2500x650x915

- Constructed with grade 430 brushed Stainless Steel.
- Available with splashback 100mm
- Fixed height mid shelf
- Adjustable pvc feet.

TROLLEY | GENERAL PURPOSE

MODEL	DESCRIPTION	WEIGHT (kg)	DIMENSIONS (L X B X H) mm
	General Purpose Trolley		
TR-4-18SH-600400	18sh GP Trolley Baking Tray 600x400	18	475x600x1810

- Constructed with formed 25mm Stainless Steel square tubular frame.
- Angled runners from 1.2 mm, Stainless Steel.
- Mobile on 130mm castors.
- High Temperature resistant.

TROLLEY | BLOOD CRATE

MODEL	DESCRIPTION	WEIGHT (kg)	DIMENSIONS (L X B X H) mm
	Blood Crate		
TR-3-BLOOD	Blood Crate Trolley- SS304 MBS# trd-91490	9	645x455x180

- Constructed with grade 304 Stainless Steel tray.
- Used for thawing and draining of frozen product in tray.

TROLLEY | GN

MODEL	DESCRIPTION	WEIGHT (kg)	DIMENSIONS (L X B X H) mm
	GN Trolley		
TR-40-GN 1/1 11SH	GN 1/1 Tray Trolley-11 Tier SS441-Single	17	380x530x1800
TR-40-GN 2/1 11SH	GN 1/1 Tray Trolley-11 Tier SS441-Double	26	735x530x1800

- Constructed with formed 25mm Stainless Steel square tubular frame.
- Angled runners from Stainless Steel.
- Mobile on rubber castors.

TROLLEY | TUFF TRAY

MODEL	DESCRIPTION	WEIGHT (kg)	DIMENSIONS (L X B X H) mm
	Tuff Tray		
TR-40-TTR-S-11T	Tuff Tray (400x280) Trolley- 11 Tier SS441-Single	27	460x600x1800
TR-40-TTR-D-11T	Tuff Tray (400x280) Trolley- 11 Tier SS441-Double	47	895x600x1800

- Constructed with formed 25mm Stainless Steel square tubular frame.
- Constructed with 25mm square tubing Stainless Steel.
- Angled runners from Stainless Steel.
- Mobile on rubber castors.

TROLLEY | MOBILE BIN DOLLEY

MODEL	DESCRIPTION	WEIGHT (kg)	DIMENSIONS (L X B X H) mm
	Mobile Bin Dolley		
Mobile Dolley	Mobile Dolley for Omega Bin	15	ø 450x168

- Constructed with Mild Steel Electroplated.
- Mobile on 75mm rubber castors.

TROLLEY | 15tier COLLAPSIBLE GP

MODEL	DESCRIPTION	WEIGHT (kg)	DIMENSIONS (L X B X H) mm
	Collapsible GP		
TR-4-15SH-BCE	15sh Collapsible GP Trolley SS441 (GN 1/1 & 600x400 Tray)		475x600x1810

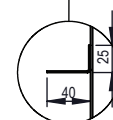
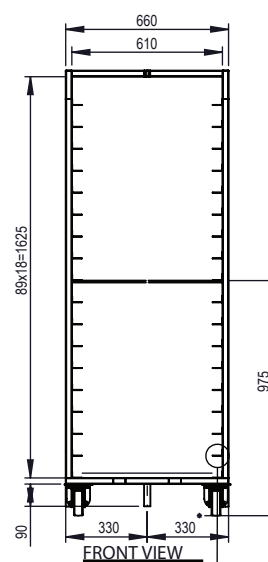
- Constructed with formed 25mm Stainless Steel square tubular frame.
- Mobile on 100mm rubber castors.
- Supplied Flat packed in box- easy to assemble.



SABS
ISO 9001



SABS
ISO 9001



ELECTRIC CULINARY RANGE

Electrified commercial equipment, fit for purpose, ranging from cooking, storage and displaying of food.



HOT CLOSET | NON-INSULATED

MODEL	DESCRIPTION Hot Closet Cabinet (Electric)	POWER (kW)	DIMENSIONS (L X B X H) mm
CA-HC-4-080065	Hot Closet	1	800x650x900
CA-HC-4-120065	Hot Closet	1	1200x650x900
CA-HC-4-160065	Hot Closet	2	1600x650x900
CA-HC-4-180065	Hot Closet	2	1800x650x900
CA-HC-4-225065	Hot Closet	2	2250x650x900

- Constructed with grade 430 brushed Stainless Steel.
- Sliding doors on hanging rollers.
- Available with splashback 100mm.
- Fixed height mid shelf.
- Adjustable feet.
- Temperature controlled between ambient and +90 °C.



FOOD SERVICE CART | INSULATED

MODEL	DESCRIPTION Food Service Cart	POWER (kW)	DIMENSIONS (L X B X H) mm
HHC-4-1SD	Hot Holding Cabinet with 1 Swing Door	1	420x690x665
FWC-4-8GN2/1	Food Warming Cabinet 8 GN2/1	1	625x800x1000
FWC-4-16GN2/1	Food Warming Cabinet 16 GN2/1	2	625x800x1790
FWC-HD-SS20Tuff-A	Ambient & Insulated 2 door tuff trays 380 x 525. Mobile	NA	1050x700x1550
FWC-HD-SS20Tuff-H	Heated max 90°C 2 door tuff trays 380 x 525. Mobile	2	1050x700x1550
FWC-HD-SS30Tuff-H	Heated max 90°C 3 door tuff trays 380 x 525. Mobile	3	1550x700x1550

- Constructed with grade 430 brushed Stainless Steel.
- Hinged doors Lockable.
- Designed to fit GN or Tuff trays.
- Forced Air re-circulation to enhance humidity and energy efficiency.
- Temperature controlled between ambient and +90 °C .
- Mobile on castors.
- Optional extra: Stainless Steel shelves.



CHIP FRYER | LOA Certificates available on request

MODEL	DESCRIPTION Chip Fryer Electric	POWER (kW)	DIMENSIONS (L X B X H) mm
FRE-4-S-20L	Electric Turbo Fryer Single 20L	16	500x650x900
FRE-4-D-10L	Electric Turbo Fryer Double 10L	18	500x650x900
FRE-4-D-20L	Electric Turbo Fryer Double 20L	32	1000x650x900

- Tank constructed with Grade 304 Stainless Steel.
- Temperature controlled between ambient and +190 °C.
- Safety thermostat with manual reset button.
- Failsafe: auto de-energization of elements after a power failure reduces power consumption and mitigates risk of fire hazards.
- Includes one 20 litre oil bin per tank.

BAIN MARIE | TABLE & HOT CLOSET MODEL

MODEL	DESCRIPTION Bain Marie	POWER (kW)	DIMENSIONS (L X B X H) mm
BM-4-TM2-0800065Z	Bain Marie Table Model 2 Div	1,5	800x650x260
BM-4-TM3-1145065Z	Bain Marie Table Model 3 Div	1,5	1145x650x260
BM-4-TM2-1450065Z	Bain Marie Table Model 4 Div	3	1450x650x260
BM-4-TM2-1750065Z	Bain Marie Table Model 5 Div	3	1755x650x260
BM-4-HC2-0800065Z	Bain Marie Hot Closet 2 Div	2,5	800x650x900
BM-4-HC3-1205065Z	Bain Marie Hot Closet 3 Div	2,5	1145x650x900
BM-4-HC4-1450065Z	Bain Marie Hot Closet 4 Div (2 Supply Wires)	3+2	1450x650x900
BM-4-HC5-175565Z	Bain Marie Hot Closet 5 Div (2 Supply Wires)	3+2	1755x650x900

- Constructed with grade 430 brushed Stainless Steel.
- 20mm Stainless Steel drainage ball valve.
- Heating element controlled by user friendly thermostat.
- Drip fillet around inserts.

**FLAT TOP GRIDDLE**

MODEL	DESCRIPTION Flat Top Griddle Electric	POWER (kW)	DIMENSIONS (L X B X H) mm
FTGFSE-4-060730	Electric Flat Top Griddle - Free Standing	5	600x730x900
FTGFSE-4-090730	Electric Flat Top Griddle - Free Standing	10	900x730x900
FTGTM-4-060650	Electric Flat Top Griddle - Table Model	5	600x650x300
FTGTM-4-090650	Electric Flat Top Griddle - Table Model	10	900x650x300

- Floor standing model: 16mm Mild Steel flat cooking top for enhanced heat retention.
- Counter top model: 12mm Mild Steel Flat Top Griddle for weight reduction to ease cleaning.
- Splash guards to rear and sides.
- Cooking tops hinged at rear.
- Temperature controlled between ambient and +300 °C.
- Mobile on castors (floor standing model).
- Optional extras: dividers, ribbed(grill) and lid.

**CHIP DUMP STATION**

MODEL	DESCRIPTION Chip Dump Floor Standing	POWER (kW)	DIMENSIONS (L X B X H) mm
TA-4-CHIPST	Chip Dump Station	0,5	400x630x900

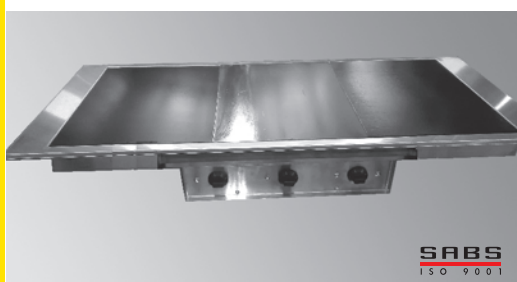
- Constructed with grade 430 brushed Stainless Steel.
- Infrared element with Protection stainless steel grid.
- Holds 3x GN Trays in Neutral Cabinet.

**INTELLI-SALAMANDER | 230VAC/15amps**

MODEL	DESCRIPTION Intelli-Salamander	POWER (kW)	DIMENSIONS (L X B X H) mm
SAL-4-INFRARED	Infrared Salamander Electrical	3	900x450x580

- Constructed with grade 430 brushed Stainless Steel.
- Electronic User Pre-set timed Instant Heat.
- 3 level adjustment for shelf.





HOT PLATE I 750 watts per division

MODEL	DESCRIPTION Hot Plate Drop In or Table Model	POWER (kW)	DIMENSIONS (L X B X H) mm
HPH-4-2PLATE	2 Plate Model	1,5	820x590
HPH-4-3PLATE	3 Plate Model	2,2	1220x590
HPH-4-4PLATE	4 Plate Model	3,0	1520x590
HPH-4-5PLATE	5 Plate Model	3,8	1800x590

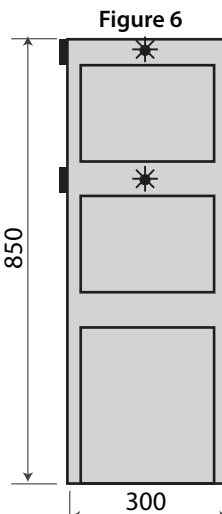
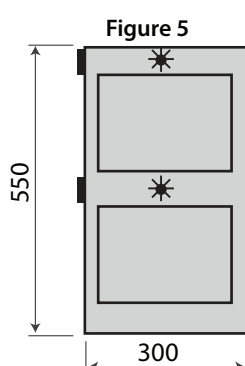
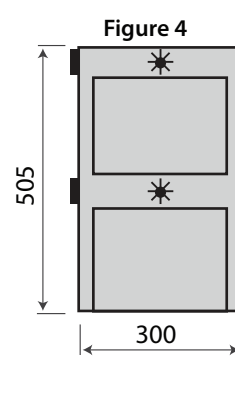
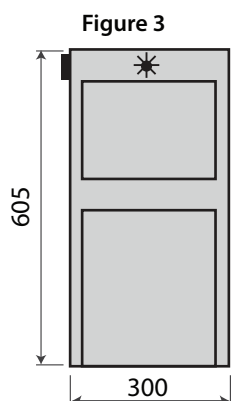
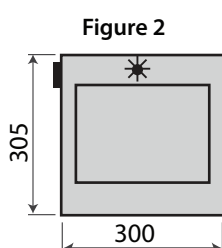
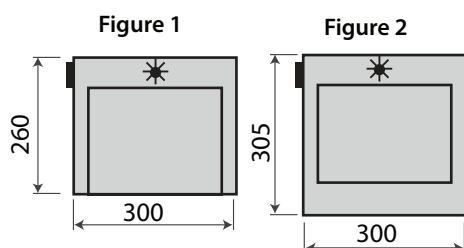
MODEL	DESCRIPTION Hot Plate Cabinet	POWER (kW)	DIMENSIONS (L X B X H) mm
HPH-CAB-4-2PLATE	2 Plate Model	1,5	800x650
HPH-CAB-4-3PLATE	3 Plate Model	2,2	1200x650
HPH-CAB-4-4PLATE	4 Plate Model	3,0	1500x650
HPH-CAB-4-5PLATE	5 Plate Model	3,8	1800x650

- Constructed with grade 430 brushed Stainless Steel.
- User friendly removal of Mild Steel hot plates.
- Energy efficient.
- Optional: integration into ambient or heated cabinet with curved glass sneeze guard and LED light.

HOT PASS

MODEL	DESCRIPTION Hot Pass	POWER (kW per metre)	DIMENSIONS (L X B X H) mm
PA-4-F1PM	Hot Pass figure 1	1,0	Lx300x260H
PA-4-F2PM	Hot Pass figure 2	1,0	Lx300x305H
PA-4-F3PM	Hot Pass figure 3	1,0	Lx300x605H
PA-4-F4PM	Hot Pass figure 4	2,0	Lx300x505H
PA-4-F5PM	Hot Pass figure 5	2,0	Lx300x550H
PA-4-F6PM	Hot Pass figure 6	2,0	Lx300x850H

- Constructed with grade 430 brushed Stainless Steel.
- Incoloy elements used for standard range.
- Surface temperatures of up to +70 °C depending on ambient temperature.
- Available with smart pass feature using motion sensors to activate Infra-Red energy efficient heating bulbs.



GAS CULINARY RANGE

Commercial gas cooking equipment, fit for purpose, efficient, and reliable.

GAS SALAMANDER

MODEL	DESCRIPTION	HEAT BTU	DIMENSIONS (L X B X H) mm
	Salamander Gas		
SAL-4-GAS	Gas Salamander	25 000	900x450x580

- Constructed with grade 430 brushed Stainless Steel.
- 3 level adjustment for shelf.
- Vented for improved flame quality.
- Instant heating.
- Easy Slide out Fat Drip Tray.



BOILING TABLE

MODEL	DESCRIPTION	HEAT BTU	DIMENSIONS (L X B X H) mm
	Boiling Tables		
BT-44-2B	Gas Boiling Table S/S - 2 Burner	40 000	450x800x900
BT-44-4B	Gas Boiling Table S/S - 4 Burner	80 000	700x800x900
BT-44-4BST	Gas Boiling Table S/S - 4 Burner Staggered	80 000	880x800x900
BT-44-6B	Gas Boiling Table S/S - 6 Burner	120 000	1050x800x900
BT-44-6BST	Gas Boiling Table S/S - 6 Burner Staggered	120 000	1230x800x900

- LPGSA Certified for LPG.
- Grade 304 Stainless Steel 5mm Flat Bar Plate Assembly.
- Easy Slide out Fat Drip Tray.



FLAT TOP GRIDDLE

MODEL	DESCRIPTION	HEAT BTU	DIMENSIONS (L X B X H) mm
	Flat Top Griddle		
FTGFSG3-060730	Gas Flat Top Grill 3 Burner- Freestanding	45000	600x730x900
FTGFSG3-090730	Gas Flat Top Grill 5 Burner- Freestanding	75000	900x730x900
FTGTMG3-4060650	Gas Flat Top Grill 3 Burner - Table Model	45000	600x650x300
FTGTMG3-090650	Gas Flat Top Grill 5 Burner - Table Model	75000	900x650x300

- LPGSA Certified for LPG.
- Constructed with grade 430 brushed Stainless Steel and 16mm Mild Steel Flat Top Griddle.
- Counter top model: 12mm Mild Steel Flat Top Griddle for weight reduction to ease cleaning.
- Splash guards to rear and sides.
- Cooking tops hinged at rear.
- Easy Slide out Fat Drip Tray.
- Optional extras: dividers, ribbed(grill) and lid.





GAS GRILL RADIANT

MODEL	DESCRIPTION	HEAT BTU	DIMENSIONS (L X B X H) mm
	Gas Grill Radiant		
RGFS-44-4B-070650	Gas Radiant Grill Free Standing - 4 Burner	60 000	700x650x900
RGFS-44-6B-086650	Gas Radiant Grill Free Standing - 6 Burner	90 000	860x650x900
RGFS-44-8B-110650	Gas Radiant Grill Free Standing - 8 Burner	120 000	1100x650x900
RGFS-44-10B-135650	Gas Radiant Grill Free Standing - 10 Burner	150 000	1350x650x900
RGFS-44-12B-160650	Gas Radiant Grill Free Standing - 12 Burner	180 000	1600x650x900
RGTM-44-4B-070650	Gas Radiant Grill Table Model - 4 Burner	60 000	700x650x300
RGTM-44-6B-086650	Gas Radiant Grill Table Model - 6 Burner	90 000	860x650x300
RGTM-44-8B-110650	Gas Radiant Grill Table Model - 8 Burner	120 000	1100x650x300
RGTM-44-10B-135650	Gas Radiant Grill Table Model - 10 Burner	150 000	1350x650x300
RGTM-44-12B-160650	Gas Radiant Grill Table Model - 12 Burner	180 000	1600x650x300

- LPGSA Certified for LPG.
- Constructed with grade 430 brushed Stainless Steel.
- Easy Slide out Fat Drip Tray.
- Vented for improved flame quality.
- Also available in Table Model and Lava Rocks.
- Optional extras: Fish Plate.

STOCK POT BOILING TABLE

MODEL	DESCRIPTION	HEAT BTU	DIMENSIONS (L X B X H) mm
	Stock Pot Boiling Table		
SPBT-44-1B	Gas Stock Pot Boiling Table - 1 Burner	92 160	500x700x500
SPBT-44-2B	Gas Stock Pot Boiling Table - 2 Burner	184 320	1000x700x500
SPBT-44-3B	Gas Stock Pot Boiling Table - 3 Burner	276 480	1500x700x500

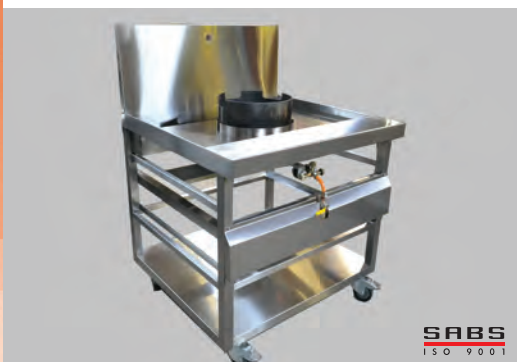
- Grade 304 Stainless Steel Plate Assembly.
- Functional with LPG.
- Easy Slide out Fat Drip Tray.



WOK TABLE

MODEL	DESCRIPTION	HEAT BTU	DIMENSIONS (L X B X H) mm
	Wok Table		
WOK 1B 900	Gas 1 Burner Wok Water Cooled (HP)	92 160	900x850x815
WOK 3B 1800	Gas 3 Burner Wok Water Cooled (HP x 2/LP x 1)	276 480	1800x850x815
WOK 5B 2400	Gas 5 Burner Wok Water Cooled (HP x 4/LP x 1)	460 800	2400x850x815

- Constructed with grade 304 brushed Stainless Steel.
- Uses LPG on High pressure regulator/Line.
- Water Cooled Top.
- **LPG or Town Gas compliance certification to be performed by installer or client.**



UNDERBARS

DOORS: Self-closing with Auto hold open functionality / Magnetic clip-on door gaskets / Integrated handles welded on to Stainless Steel.

LIGHTING: LED T8 Daylight white or Blue.

DIMENSIONS: Standard Depth is 650mm, 750mm available on request.
Standard traditional lengths are 1180mm (1.5doors) , 1780mm (2.5doors) , 2380mm (3.5doors) - for STD doors 550mm.
Gastronorm lengths are 1350mm (2.5doors) , 1780mm (3.5doors) , 2380mm (4.5doors) - for GN doors 460mm. Work top Height is 900mm.

CONSTRUCTION: 50mm laminate virgin polystyrene insulation in combination with Chromadek and Brushed 430 Stainless Steel.
Splashbacks - is retrofit, 100mm being the industry norm, however differing heights can be accommodated on request.
Weights: 80 to 197kg - see spec sheet.

MOBILITY: Wheels or feet? Height adjustable feet are generally selected for uneven floors and is on request only - No cost difference.

STORAGE: Stainless Steel 430 Shelving and height adjustable on heavy duty nylon clips. GN variable racking system to accommodate GN1/1 are fitted into the GN fridges according to the following quantities per GN full door:

• **GN1/1x65mm 6x** • **GN1/1x80mm 4x** • **GN1/1x100mm 4x** • **GN1/1x150mm 3x**

Raised pizza tops - includes night cover and insulation. Number of inserts detailed below:

• **1180mm: 6x 1/6th or 3x 1/3rd up to 150mm depth** • **1780mm: 10x 1/6th or 5x 1/3rd up to 150mm depth**
• **2380mm: 13x 1/6th or 6x 1/3rd up to 150mm depth** • **3000mm: 17x 1/6th or 8x 1/3rd up to 150mm depth**

OPTIONS: Drawers, Locking bars, Doors both sides, Material spec change 304S/S etc, Dimensions, Sneezeguards – curved and square.

TEMPERATURE: Minimum settings: Chiller +2°C, Freezer -14°C. **POWER:** 550 Watts.

STAINLESS STEEL DOOR (STD) PLAIN, SPLASHBACK 100MM & PIZZA TOP

MODEL	DESCRIPTION Plain Top	WEIGHT (kg)	DIMENSIONS (L X B X H) mm
UFPTSD-1180-1.5	1.5 SS Doors with one height adjustable shelf per full door	80	1180x650x900
UFPTSD-1780-2.5	2.5 SS Doors with one height adjustable shelf per full door	110	1780x650x900
UFPTSD-2380-3.5	3.5 SS Doors with one height adjustable shelf per full door	125	2380x650x900
UFPTSD-3000-4.5	4.5 SS Doors with one height adjustable shelf per full door	140	3000x650x900

MODEL	DESCRIPTION 100mm Splash Back to rear	WEIGHT (kg)	DIMENSIONS (L X B X H) mm
UFSBSD-1180-1.5	1.5 SS Doors with one height adjustable shelf per full door	83	1180x650x900
UFSBSD-1780-2.5	2.5 SS Doors with one height adjustable shelf per full door	115	1780x650x900
UFSBSD-2380-3.5	3.5 SS Doors with one height adjustable shelf per full door	131	2380x650x900
UFSBSD-3000-4.5	4.5 SS Doors with one height adjustable shelf per full door	147	3000x650x900

MODEL	DESCRIPTION Insulated Raised Pizza Back with Hinged Night Cover	WEIGHT (kg)	DIMENSIONS (L X B X H) mm
UFPBSD-1180 -1.5	1.5 SS Doors with one height adjustable shelf holds 6 inserts 1/6th (not included)	86	1180x650x900
UFPBSD-1780-2.5	2.5 SS Doors with one height adjustable shelf holds 10 inserts 1/6th (not included)	119	1780x650x900
UFPBSD-2380-3.5	3.5 SS Doors with one height adjustable shelf holds 13 inserts 1/6th (not included)	137	2380x650x900
UFPBSD-3000-4.5	4.5 SS Doors with one height adjustable shelf holds 17 inserts 1/6th (not included)	155	3000x650x900





GLASS DOOR (STD) PLAIN, SPLASHBACK 100MM & PIZZA TOP

MODEL	DESCRIPTION Plain Top	WEIGHT (kg)	DIMENSIONS (L X B X H) mm
UFPTGD-1180-1.5	1.5 Glass Doors with one height adjustable shelf per full door and LED light.	85	1180x650x900
UFPTGD-1780-2.5	2.5 Glass Doors with one height adjustable shelf per full door and LED light.	120	1780x650x900
UFPTGD-2380-3.5	3.5 Glass Doors with one height adjustable shelf per full door and LED light.	140	2380x650x900
UFPTGD-3000-4.5	4.5 Glass Doors with one height adjustable shelf per full door and LED light.	155	3000x650x900

MODEL	DESCRIPTION (100mm Splash Back to rear)	WEIGHT (kg)	DIMENSIONS (L X B X H) mm
UFSBGD-1180-1.5	1.5 Glass Doors with one height adjustable shelf per full door and LED light.	88	1180x650x900
UFSBGD-1780-2.5	2.5 Glass Doors with one height adjustable shelf per full door and LED light.	125	1780x650x900
UFSBGD-2380-3.5	3.5 Glass Doors with one height adjustable shelf per full door and LED light.	146	2380x650x900
UFSBGD-3000-4.5	4.5 Glass Doors with one height adjustable shelf per full door and LED light.	167	3000x650x900

MODEL	DESCRIPTION (Insulated Raised Pizza Back with Hinged Night Cover)	WEIGHT (kg)	DIMENSIONS (L X B X H) mm
UFPTGD-1180-1.5	1.5 Glass Doors with one height adjustable shelf - holds 6 inserts 1/6th (not included).	91	1180x650x900
UFPTGD-1780-2.5	2.5 Glass Doors with one height adjustable shelf - holds 10 inserts 1/6th (not included).	129	1780x650x900
UFPTGD-2380-3.5	3.5 Glass Doors with one height adjustable shelf - holds 13 inserts 1/6th (not included).	152	2380x650x900
UFPTGD-3000-4.5	4.5 Glass Doors with one height adjustable shelf - holds 17 inserts 1/6th (not included).	175	3000x650x900

POLAR TOP STAINLESS STEEL DOOR (STD)

SS=STAINLESS STEEL, GD = GLASS

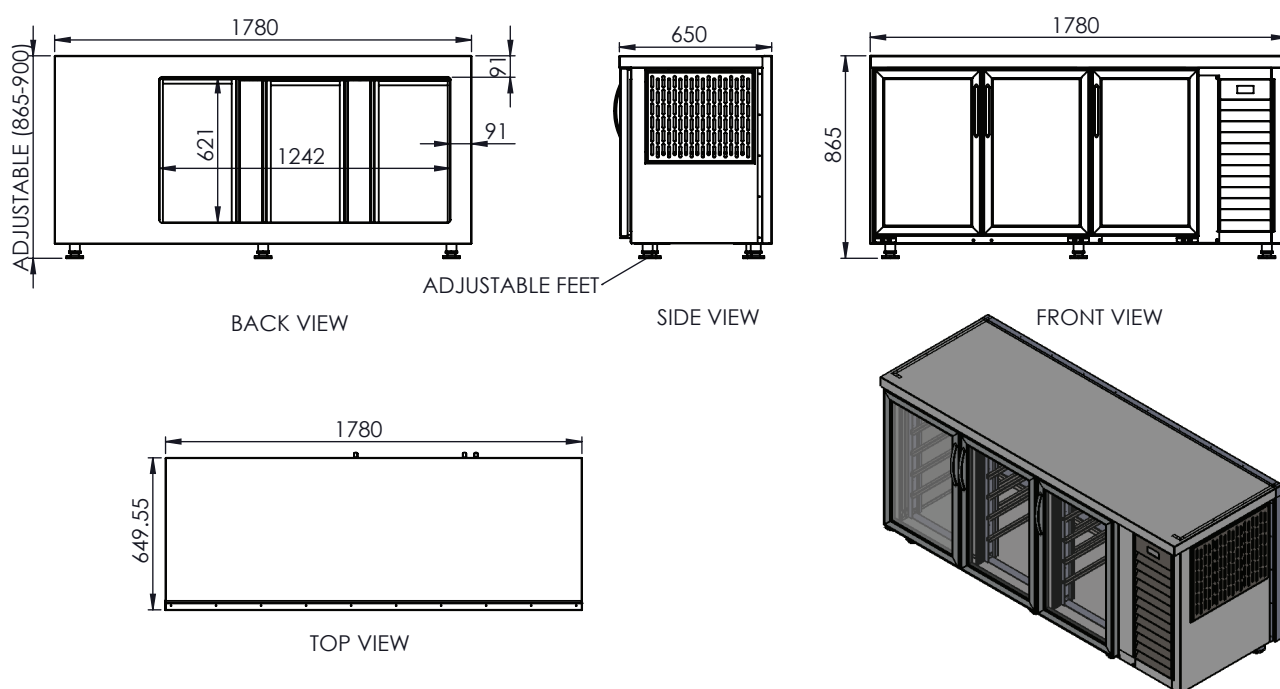
MODEL	DESCRIPTION Plain Top Stainless Doors Only	WEIGHT (kg)	DIMENSIONS (L X B X H) mm
UFPPTSD-1180-1.5	1.5 SS Doors with one height adjustable shelf - polar top 100mm	88	1180 x 650 x 900
UFPPTSD-1780-2.5	2.5 SS Doors with two height adjustable shelves - polar top 100mm	125	1780 x 650 x 900
UFPPTSD-2380-3.5	3.5 SS Doors with three height adjustable shelves - polar top 100mm	146	2380 x 650 x 900
UFPPTSD-3000-4.5	4.5 SS Doors with four height adjustable shelves - polar top 100mm	167	3000 x 650 x 900

STAINLESS STEEL DOOR (GN) PLAIN, SPLASHBACK 100MM & PIZZA TOP

MODEL	DESCRIPTION Plain Top	WEIGHT (kg)	DIMENSIONS (L X B X H) mm
UFPTSD-1350-2.5GN	2.5 SS Doors with two GN1/1 variable racking systems.	92	1350x650x900
UFPTSD-1780-3.5GN	3.5 SS Doors with three GN1/1 variable racking systems.	128	1780x650x900
UFPTSD-2380-4.5GN	4.5 SS Doors with four GN1/1 variable racking systems.	149	2380x650x900
UFPTSD-3000-5.5GN	5.5 SS Doors with five GN1/1 variable racking systems.	170	3000x650x900

MODEL	DESCRIPTION 100mm Splash Back to Rear	WEIGHT (kg)	DIMENSIONS (L X B X H) mm
UFSBSD-1350-2.5GN	2.5 SS Doors with two GN1/1 variable racking systems.	95	1350x650x900
UFSBSD-1780-3.5GN	3.5 SS Doors with three GN1/1 variable racking systems.	133	1780x650x900
UFSBSD-2380-4.5GN	4.5 SS Doors with four GN1/1 variable racking systems.	155	2380x650x900
UFSBSD-3000-5.5GN	5.5 SS Doors with five GN1/1 variable racking systems.	177	3000x650x900

MODEL	DESCRIPTION Insulated Raised Pizza Back with Hinged Night Cover	WEIGHT (kg)	DIMENSIONS (L X B X H) mm
UFPBSD-1350-2.5GN	2.5 SS Doors with two GN1/1 variable racking system - holds 5 inserts 1/6th (not included).	102	1350x650x900
UFPBSD-1780-3.5GN	3.5 SS Doors with three GN1/1 variable racking system - holds 10 inserts 1/6th (not included).	140	1780x650x900
UFPBSD-2380-4.5GN	4.5 SS Doors with four GN1/1 variable racking system - holds 13 inserts 1/6th (not included).	162	2380x650x900
UFPBSD-3000-5.5GN	5.5 SS Doors with five GN1/1 variable racking system - holds 17 inserts 1/6th (not included).	169	3000x650x900





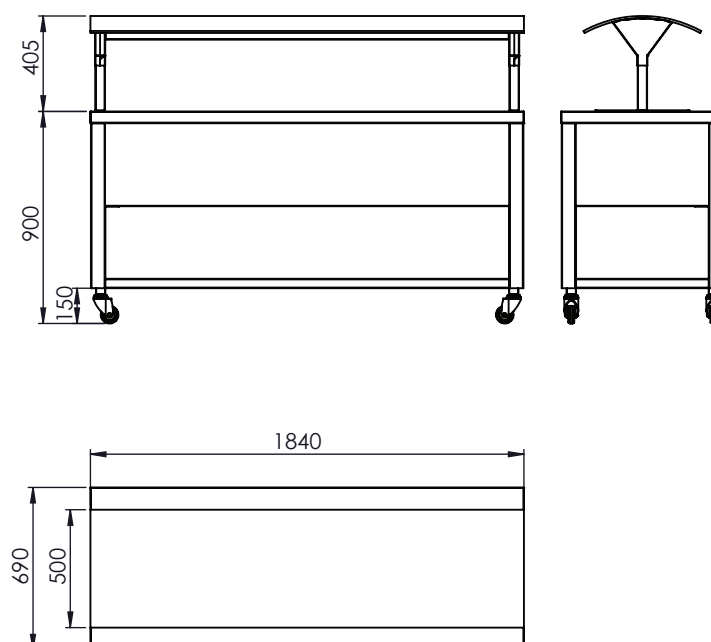
GLASS DOOR (GN) PLAIN, SPLASHBACK 100MM & PIZZA TOP

MODEL	DESCRIPTION	WEIGHT	DIMENSIONS
	Plain Top	(kg)	(L X B X H) mm
UFPTGD-1350-2.5GN	2.5 GD Doors with two GN1/1 variable racking systems and LED light.	80	1350x650x900
UFPTGD-1780-3.5GN	3.5 GD Doors with three GN1/1 variable racking systems and LED light.	1110	1780x650x900
UFPTGD-2380-4.5GN	4.5 GD Doors with four GN1/1 variable racking systems and LED light.	125	2380x650x900
UFPTGD-3000-5.5GN	5.5 GD Doors with five GN1/1 variable racking system and LED light.	140	3000x650x900

MODEL	DESCRIPTION	WEIGHT	DIMENSIONS
	100mm Splash Back to Rear	(kg)	(L X B X H) mm
UFSBGD-1350-2.5GN	2.5 GD Doors with two GN1/1 variable racking systems and LED light.	88	1350x650x900
UFSBGD-1780-3.5GN	3.5 GD Doors with three GN1/1 variable racking systems and LED light.	125	1780x650x900
UFSBGD-2380-4.5GN	4.5 GD Doors with four GN1/1 variable racking systems and LED light.	146	2380x650x900
UFSBGD-3000-5.5GN	5.5 GD Doors with five GN1/1 variable racking systems and LED light.	167	3000x650x900



MODEL	DESCRIPTION	WEIGHT	DIMENSIONS
	100mm Splash Back to Rear	(kg)	(L X B X H) mm
UFPBGD-1350-2.5GN	2.5 Glass Doors with two GN1/1 variable racking systems - holds 5 inserts 1/6th (not included).	91	1350x650x900
UFPBGD-1780-3.5GN	3.5 Glass Doors with three GN1/1 variable racking systems - holds 10 inserts 1/6th (not included).	129	1780x650x900
UFPBGD-2380-4.5GN	4.5 Glass Doors with four GN1/1 variable racking systems - holds 13 inserts 1/6th (not included).	152	2380x650x900
UFPBGD-3000-5.5GN	5.5 Glass Doors with five GN1/1 variable racking systems - holds 17 inserts 1/6th (not included).	175	3000x650x900



SLIDE TOP WITH BOTTOM LOADING DOORS

SS=STAINLESS STEEL, GD = GLASS

MODEL	DESCRIPTION	WEIGHT	DIMENSIONS
	Plain Top Stainless Doors Only	(kg)	(L X B X H) mm
UFSTSD-1180 -1.0	1 bottom loading SS Door with 1 fixed shelf & 2 sliding lids	83	1180 x 650 x 900
UFSTSD-1780-2.0	2 bottom loading SS Doors with 2 fixed shelves & 3 sliding lids	115	1780 x 650 x 900
UFSTSD-2380-3.0	3 bottom loading SS Doors with 3 fixed shelves & 4 sliding lids	131	2380 x 650 x 900
UFSTSD-3000-4.0	4 bottom loading SS Doors with 4 fixed shelves & 5 sliding lids	147	3000 x 650 x 900



FREEZER STAINLESS STEEL DOOR (GN)

MODEL	DESCRIPTION	WEIGHT	DIMENSIONS
	Plain Top Minus 14°C	(kg)	(L X B X H) mm
UFZPTSD-1350-2.0	2 SS 460mm Wide Doors with one height adjustable shelf per full door	80	1180 x 650 x 900
UFZPTSD-1780-3.0	3 SS 460mm Wide Doors with one height adjustable shelf per full door	110	1780 x 650 x 900
UFZPTSD-2380-4.0	4 SS 460mm Wide Doors with one height adjustable shelf per full door	125	2380 x 650 x 900
UFZPTSD-3000-5.0	5 SS 460mm Wide Doors with one height adjustable shelf per full door	140	3000 x 650 x 900



MODEL	DESCRIPTION	WEIGHT	DIMENSIONS
	100mm Splash Back to Rear Minus 14°C	(kg)	(L X B X H) mm
UFZSBSD-1350-2.0	2 SS 460mm Wide Doors with one height adjustable shelf per full door	80	1180 x 650 x 900
UFZSBSD-1780-3.0	3 SS 460mm Wide Doors with one height adjustable shelf per full door	110	1780 x 650 x 900
UFZSBSD-2380-4.0	4 SS 460mm Wide Doors with one height adjustable shelf per full door	125	2380 x 650 x 900
UFZSBSD-3000-5.0	5 SS 460mm Wide Doors with one height adjustable shelf per full door	140	3000 x 650 x 900



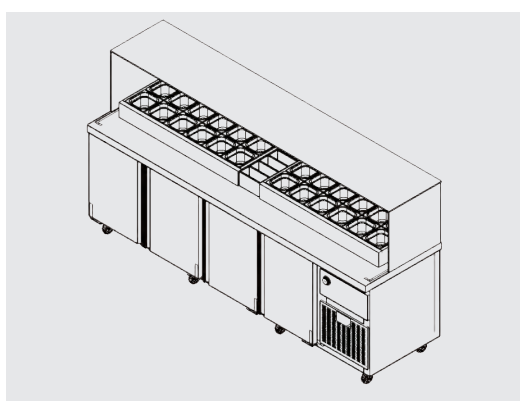
HAMPERS STAINLESS STEEL DOOR (STD)

MODEL	DESCRIPTION	WEIGHT	DIMENSIONS
	200mm Cutting Board	(kg)	(L X B X H) mm
UFHAMSD-1180-1.5	1.5 SS Doors with one height adjustable shelf per full door - holds 6-12 inserts 1/6th (not included).	80	1180x650x900
UFHAMSD-1780-2.5	2.5 SS Doors with one height adjustable shelf per full door - holds 10-20 inserts 1/6th (not included).	110	1780x650x900
UFHAMSD-2380-3.5	3.5 SS Doors with one height adjustable shelf per full door - holds 13-26 inserts 1/6th (not included).	125	2380x650x900
UFHAMSD-3000-4.5	4.5 SS Doors with one height adjustable shelf per full door - holds 17-34 inserts 1/6th (not included).	140	3000x650x900



HAMPERS GLASS DOOR (STD)

MODEL	DESCRIPTION	WEIGHT	DIMENSIONS
	200mm Cutting Board	(kg)	(L X B X H) mm
UFHAMGD-1180-1.5	1.5 Glass Doors with one height adjustable shelf per full door - holds 6-12 inserts 1/6th (not included).	90	1180x650x900
UFHAMGD-1780-2.5	2.5 Glass Doors with one height adjustable shelf per full door - holds 10-20 inserts 1/6th (not included).	120	1780x650x900
UFHAMGD-2380-3.5	3.5 Glass Doors with one height adjustable shelf per full door - holds 13-26 inserts 1/6th (not included).	135	2380x650x900
UFHAMGD-3000-4.5	4.5 Glass Doors with one height adjustable shelf per full door - holds 17-34 inserts 1/6th (not included).	150	3000x650x900





ICE BIN

MODEL	DESCRIPTION	WEIGHT (kg)	DIMENSIONS (L X B X H) mm	STORAGE CAPACITY (kg)
ICE-BIN-274L	Ice Bin - 274 litre (Stainless Steel)	60	1000x750x1000	274
ICE-BIN-342L	Ice Bin - 342 litre (Stainless Steel)	75	1250x750x1000	342



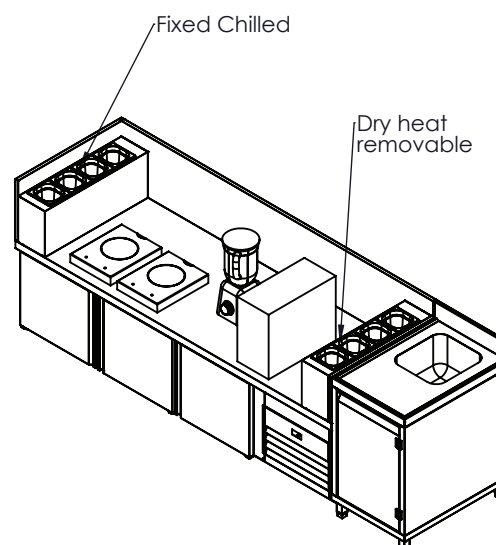
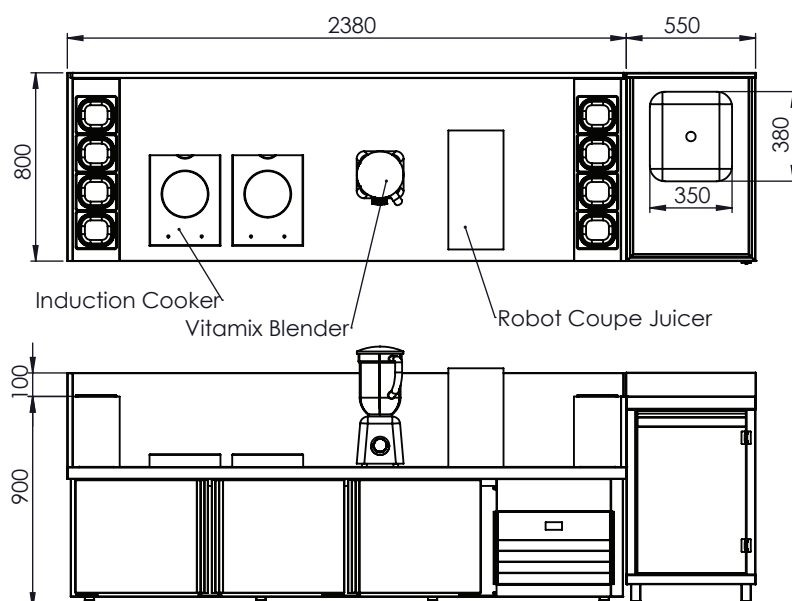
LOW BOY STAINLESS STEEL DOORS

MODEL	DESCRIPTION	WEIGHT (kg)	DIMENSIONS (L X B X H) mm
	425x520mm Doors, Tops suitable for Industrial Cooking Equipment		
UFLOWBOY SD-1200-2GN	2 SS 425mm wide Doors with one height adjustable shelf per full door	85	1200x650x700
UFLOWBOY SD-1780-3GN	3 SS 425mm wide Doors with one height adjustable shelf per full door	120	1780x650x700
UFLOWBOY SD-2380-4GN	4 SS 425mm wide Doors with one height adjustable shelf per full door	140	2380x650x700
UFLOWBOY SD-3000-6GN	6 SS 425mm wide Doors with one height adjustable shelf per full door	160	3000x650x700



LOW BOY GLASS DOORS

MODEL	DESCRIPTION	WEIGHT (kg)	DIMENSIONS (L X B X H) mm
	425x520mm Doors, Tops suitable for Industrial Cooking Equipment		
UFLOWBOY GD-1200-2GN	2 Glass 425mm wide Doors with one height adjustable shelf per full door and LED light.	80	1200x650x700
UFLOWBOY GD-1780-3GN	3 Glass 425mm wide Doors with one height adjustable shelf per full door and LED light.	110	1780x650x700
UFLOWBOY GD-2380-4GN	4 Glass 425mm wide Doors with one height adjustable shelf per full door and LED light.	125	2380x650x700
UFLOWBOY GD-3000-6GN	6 Glass 425mm wide Doors with one height adjustable shelf per full door and LED light.	140	3000x650x700



Warranty for Cooking Equipment

ALL EQUIPMENT DELIVERED OR COLLECTED IS TO BE INSPECTED FOR DAMAGES PRIOR TO SIGNING OF THE DELIVERY NOTE OR TRANSPORTER'S WAYBILL.

METNOR WARRANTY - EXCLUDING FREIGHT, GLASS AND LIGHTS.

COVER

Labour and travelling (within a 100km radius of the dealers noted business address) are covered for the first fourteen days and parts are covered for a period not exceeding six months from date of METNOR invoice to the dealer.

Loss of revenue, stock, production and/or damage to property is not covered by this warranty.

Failure of electrical components due to incorrect voltage, lightning or power surges are not covered by this warranty.

TERMS

It is METNOR'S recommendation that the units are serviced and maintained at least every six months depending on the usage. It is the dealer and/or end user's responsibility to ensure that the equipment is maintained and serviced timeously by trained personnel.

NULLIFICATION

This warranty will be rendered null and void should any modifications have been done to the equipment or untrained personnel having serviced or worked on the unit, or should the manufacturer's tag reflecting the model and serial number have been removed.
Immediate nullification if failure is found to be as a result of neglect or abuse.

PROCEDURE

Email all details to the responsible person at METNOR. Liza@metnor.co.za or Lizelle@metnor.co.za .
Please send an order number for the parts required. The parts will then be invoiced and dispatched to you.

Only on receipt and after concluding that there was a legitimate factory fault on the old components, will METNOR pass a credit accordingly –see COVER.
Should it be found that a legitimate claim does not exist, a further invoice for the labour, travelling and sundries will be issued.
Payment offsets are not allowed.

We trust that the above is in order and clear. No deviations in the above will be allowed and the procedure must be strictly adhered to- unless agreed to in writing by METNOR SENIOR MANAGEMENT.

Warranty for Underbars and Low Boys

ALL CABINETS DELIVERED OR COLLECTED ARE TO BE INSPECTED FOR DAMAGES PRIOR TO SIGNING OF THE DELIVERY NOTE OR TRANSPORTER'S WAYBILL.

METNOR WARRANTY - EXCLUDING FREIGHT, GLASS AND LIGHTS.

COVER

Labour and travelling (within a 100km radius of the dealers noted business address) are covered for the first six months and parts are covered for a period not exceeding twelve months from date of METNOR invoice to the dealer.

If the warranty falls within the 14-day period, and if the unit cannot be repaired on site, METNOR will cover the cost to uplift the unit and will repair it, or supply a replacement.

Loss of revenue, stock, production and/or damage to property is not covered by this warranty.

Failure of electrical components due to incorrect voltage, lightning or power surges are not covered by this warranty.

TERMS

It is METNOR'S recommendation that the units are serviced every six months and that the condenser is kept clean at all times. It is the dealer and/or end user's responsibility to ensure that the fridges are maintained and serviced timeously by qualified personnel if filters are not installed to condenser.

NULLIFICATION

This warranty will be rendered null and void should any modifications have been done to the unit, or unqualified personnel having serviced or worked on the unit, or should the manufacturer's tag reflecting the model and serial number have been removed.

PROCEDURE

Email all details to the responsible person at METNOR.

METNOR will require an order number for the labour, travelling and spares required. The spares will then be invoiced and dispatched to you.

Only on receipt and after concluding that there was a legitimate factory fault of the old components, will we then pass you a credit accordingly – see COVER.
Should it be found that a legitimate claim does not exist, a further invoice for the labour, travelling and sundries will be issued.
We do not allow payment offsets.



**ENQUIRE ABOUT METNOR REFRIGERATION AND CATERING EQUIPMENT –
CONCEPT, DESIGN AND MANUFACTURE.**

Grant Norton : CEO
grant@metnor.co.za

Willem Pieters : General Manager
willem@metnor.co.za

Jean Deville : Key Accounts Manager
jean@metnor.co.za

Taariq Patel : Engineering & Design Manager
taariq@metnor.co.za

Landline: 021-905 2980

Fax: 021-905 2983

Co-ordinates: -33.975223,18.689626

www.metnor.co.za





REFRIGERATION & CATERING EQUIPMENT
MANUFACTURERS

12 Heath Circle, Blackheath, 7580
Tel: 021 905 2980 • Fax: 021 905 2983
Email: info@metnor.co.za
GPS: -33.975223,18.689626
www.metnor.co.za